

## Volunteer Knitwear™ Chore Fleece Full-Zip Hoodie VL130ZH

This hefty, true-blue fleece has a grittier, textured hand-plus it's crafted with durability to stand the test of time.

- 13-ounce, 80/20 cotton/poly
- 50/50 cotton/poly (Charcoal Heather)
- Proudly American made
- 1-panel hood with dart for fit
- Metal grommets with drawcords with knotted ends
- Twill neck tape
- Slightly forward shoulders
- Metal zipper
- 1x1 rib knit cuffs and hem
- Front pockets
- Side seamed
- Woven label

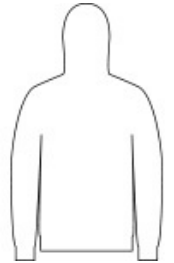
\*\*

### CARE INSTRUCTIONS

Machine Wash Cold Inside Out With Like Colors. Use Non-Chlorine Bleach When Needed. Tumble Dry Low. Do Not Iron.



front



back

### HOW TO MEASURE



#### CHEST WIDTH

Measure under the arm and around the fullest part of the chest with arms down, keeping tape horizontal.

### SIZE CHART

	S	M	L	XL	2XL	3XL	4XL
Chest	35-37	38-40	41-43	44-46	47-49	50-53	54-57

### COLOR INFORMATION



Charcoal Heather



Deep Black  
PMS BLACK C



Heather Grey