



With a subtle heather texture and moisture-wicking technology, this polo will help you achieve all your performance endeavors.

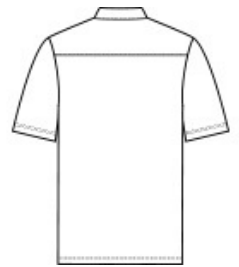
- 4.4-ounce, 100% polyester
- Tag-free label
- 3-button placket

**CARE INSTRUCTIONS**

Machine wash cold with like colors. Do not use fabric softener. Do not bleach. Tumble dry low. Remove promptly. Cool iron if needed. Do not dry clean.



front



back

**HOW TO MEASURE**



**CHEST WIDTH**

Measure under the arm and around the fullest part of the chest with arms down, keeping tape horizontal.

**SIZE CHART**

	XS	S	M	L	XL	2XL	3XL	4XL
Chest	32-34	35-37	38-40	41-43	44-46	47-49	50-53	54-57

**COLOR INFORMATION**



Black Heather  
PMS NTR BLACK  
C



Dark Royal  
Heather  
PMS 2767C



Deep Navy  
Heather  
PMS 7547C



Light Grey  
Heather