



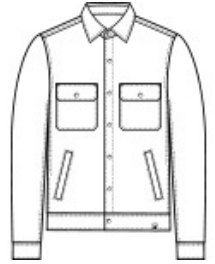
Russell Outdoors™ Basin Jacket RU550



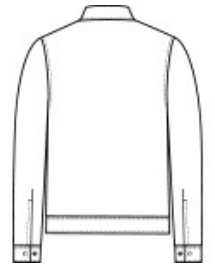
With its heavy wool-like feel, this jacket's the perfect outer layer. Reminiscent of aviator style jackets, it's ready to throw on over any Russell Outdoors™ tee-making it ideal for a casual office vibe, corporate retreat or favorite hike.

- 12-ounce, 100% polyester
- Folded collar
- Full snap front with branded metal snaps
- 2 chest pockets with branded metal snaps
- Side pockets
- Banded fitted hem
- Exterior embossed faux leather tab at hem

**



front



back

COLOR INFORMATION



Deep Black Plaid



Graphite Heather



Red Plaid