



Whether worn alone or with a Sport-Tekwind shirt, these water-repellent pants provide lightweight protection.

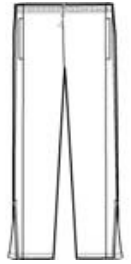
- 100% polyester
- 100% polyester mesh lining above knees, poly lining below for easy on/off
- Elastic waistband with drawcord
- Side pockets
- Back pocket with hook and loop closure
- Extended leg zippers

**Please note: This product is transitioning from woven labels to tag-free labels. Your order may contain a combination of both labels*

CARE INSTRUCTIONS

Machine wash cold, gentle cycle with like colors. Use mild detergent, remove immediately. Do not allow to lay on itself when wet. Do not Bleach. Tumble dry low. Cool iron, if needed.

[Tips For Effectively Screen Printing Polyester Fabrics](#)

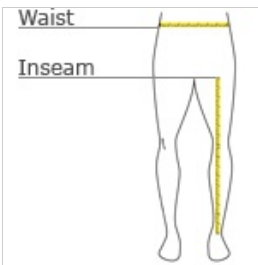


front



back

HOW TO MEASURE



WAIST
Measure around the smallest part of the natural waist.

INSEAM
Measure a similar style pant that fits well and is the desired length. Measure from the crotch seam to the hem.

SIZE CHART

	XS	S	M	L	XL	2XL	3XL	4XL
Waist	26-28	29-31	32-34	35-37	38-40	41-43	44-47	48-51
Inseam	30	31	32	32	33	33 1/2	34	34 1/2

COLOR INFORMATION

