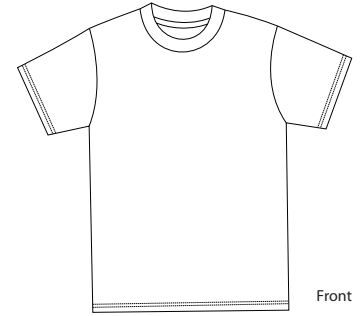
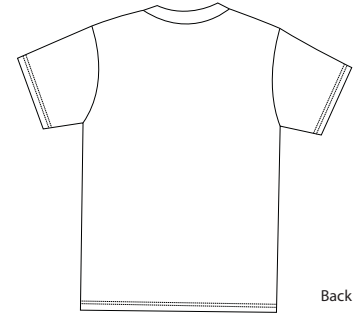


100% Cotton Essential T-Shirt

PORT & COMPANY®



Front



Back

PC61

- * 6.1-ounce 100% cotton * Taped shoulder to shoulder * Coverseamed neck
- * Double-needle hem

Care Instructions:
Machine wash cold, inside out, with like colors. Only non-chlorine bleach when needed. Tumble dry medium. Medium-hot iron. Do not iron decoration.

Finished Measurements in Inches

Size	S	M	L	XL	2XL	3XL	4XL	5XL	6XL
Width	18	20	22	24	26	28	30	32	34
Length	27	29	30	31	33	34	35	36	37
Sleeve	16 1/8	17 5/8	19 1/8	20 5/8	22 1/8	23 5/8	25 1/8	26 5/8	28 1/8

Chest width measured 1" below arm hole. Body length measured from high point shoulder to hem. Sleeve length measured from CB.

Color Chart

Colors	Aquatic Blue	Ash	Athletic Heather	Athletic Maroon	Black	Brown	Cardinal	Charcoal
PMS	298 C	No Match	No Match	229 C	Process Black	7519 C	208 C	431 C
Colors	Colonial Blue	Daffodil Yellow	Dark Green	Gold	Kelly	Light Blue	Lime	Natural
PMS	646 C	134 C	5535 C	137 C	340 C	543 C	367 C	4685 C
Colors	Navy	Olive	Orange	Orange Sherbet	Pale Pink	Purple	Red	Royal
PMS	296 C	No Match	172 C	1575 C	670 C	273 C	200 C	661 C
Colors	Sand	Sangria	Spruce	Steel Blue	Stone-washed Blue	Stone-washed Green	Violet	White
PMS	No Match	227 C	No Match	7546 C	5414 C	414 C	7456 C	No Match
Colors	Yellow	Candy Pink	Carolina Blue	Chamois Yellow	Ultramarine Blue	Dark Chocolate Brown	Dark Heather Grey	Deep Marine
PMS	127 C	189 C	659 C	131 C	7452 C	476 C	425 C	654 C
Colors	Dill Green	Dusty Brown	Fiery Red	Forest Green	Jade Green	Charcoal	Light Sand	Rich Red
PMS	No Match	No Match	1795 C	627 C	569 C	ClGy 11 C	7534 C	201 C
Colors	Lemon Yellow	Pistachio	Medium Grey	Texas Orange	Turquoise			
PMS	123 C	7494 C	7539 C	1675 C	7461 C			

Colors

White	Athletic Maroon
Lights	Brown
Aquatic Blue	Cardinal
Ash**	Charcoal
Daffodil Yellow	Colonial Blue
Light Blue	Dark Green
Lime	Gold
Natural	Kelly
Orange Sherbet	Navy
Pale Pink	Olive
Sand	Orange
Stonewashed Blue	Purple
Stonewashed Green	Red
Violet	Royal
Yellow	Sangria
Darks	Spruce
Athletic Heather*	Steel Blue

Please Note:

Colors shown are approximate and for reference only. For closest match see PMS colors, or for exact match, returnable samples and grommited samples are available.

*90/10 Cotton/Polly

**99/1 Cotton/Polly