



With a subtle heather texture and mesh panels at targeted heat zones, this tee has moisture-wicking technology and breathability for optimum performance.

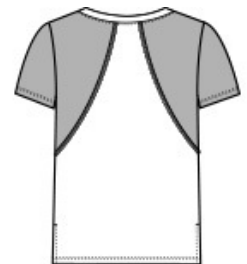
- 4-ounce, 100% polyester
- Dyed-to-match neck band
- Mesh panels at shoulders and underarms
- Tag-free label
- Wide V-neck
- Side vents
- Drop tail hem

CARE INSTRUCTIONS

Machine wash cold with like colors. Do not use fabric softener. Do not bleach. Tumble dry low. Remove promptly. Cool iron if needed. Do not dry clean.

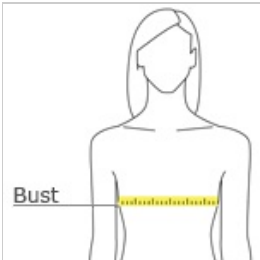


front



back

HOW TO MEASURE

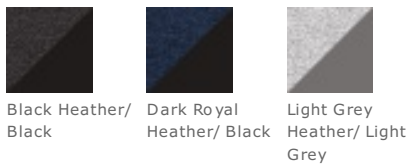


BUST
Measure under the arm and around the fullest part of the bust with arms down, keeping tape horizontal.

SIZE CHART

	XS	S	M	L	XL	XXL	3XL	4XL
Size	2	4/6	8/10	12/14	16/18	20/22	24/26	28/30
Bust	32-34	35-36	37-38	39-41	42-44	45-47	48-51	52-55

COLOR INFORMATION



Black Heather/Black
Dark Royal Heather/Black
Light Grey Heather/Light Grey