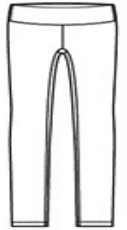


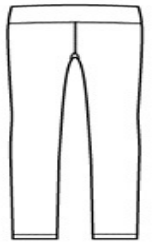


With plenty of stretch for movement, this moisture-wicking legging complements an active lifestyle.

- 8.3-ounce, 87/13 poly/spandex jersey
- Tag-free label
- Wide waistband with hidden pocket
- Flatlock seams for comfort
- No exterior leg seams for easy decoration
- 7/8 length

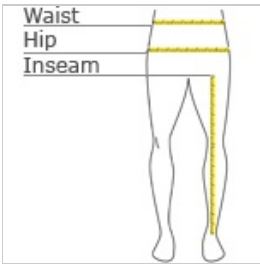


front



back

**HOW TO MEASURE**



**WAIST**

Measure around the smallest part of the natural waist.

**HIPS**

With feet together, measure around the fullest part of hips, keep tape horizontal.

**INSEAM**

Measure a similar style pant that fits well and is the desired length. Measure from the crotch seam to the hem.

**SIZE CHART**

	XS	S	M	L	XL	XXL	3XL	4XL
Size	2	4/6	8/10	12/14	16/18	20/22	24/26	28/30
Waist	24-26	27-28	29-30	31-33	34-36	37-39	40-43	44-47
Hip	34-36	37-38	39-40	41-43	44-46	47-49	50-53	54-57
Inseam	30 1/2	31	31 1/2	32	32 1/2	33	33	33

**COLOR INFORMATION**



Black  
PMS NTR BLACK  
C