



OGIO® Ladies Luuma Full-Zip Fleece. LOG812



Before or after training, this full-zip jacket is casual-comfort perfection.

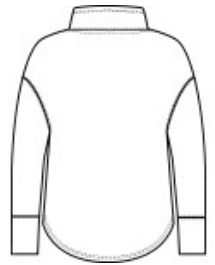
- 7.1-ounce, 57/38/5 modal/poly/spandex fleece
- OGIO heat transfer label for tag-free comfort
- Cowl neck
- Coil zipper at center front
- Front zippered pockets
- Metal O on front left hem

CARE INSTRUCTIONS

Machine wash cold with like colors. Do not use fabric softener. Only non-chlorine bleach, when needed. Tumble dry low, remove promptly. Cool iron, if necessary. Do not dry clean.

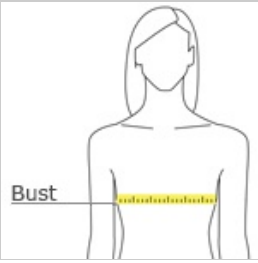


front



back

HOW TO MEASURE



BUST

Measure under the arm and around the fullest part of the bust with arms down, keeping tape horizontal.

SIZE CHART

| | XS | S | M | L | XL | 2XL | 3XL | 4XL |
|------|-------|-------|-------|-------|-------|-------|-------|-------|
| Size | 2 | 4/6 | 8/10 | 12/14 | 16/18 | 20/22 | 24/26 | 28/30 |
| Bust | 32-34 | 35-36 | 37-38 | 39-41 | 42-44 | 45-47 | 48-51 | 52-55 |

COLOR INFORMATION



Blacktop
PMS NTR BLACK
C



Petrol Grey
Heather
PMS COOL GREY
10C



River Blue Navy
PMS 533C