

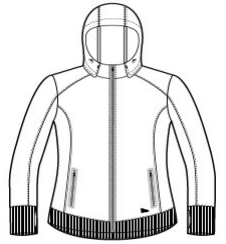


New Era® Ladies Venue Fleece Full-Zip Hoodie. LNEA522

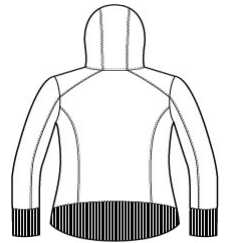


Perfect for most venues, this moisture-wicking fleece combines new-tech performance with old-school style.

- 6.2-ounce, 100% polyester fleece
- Debossed New Era neck taping
- Heat transfer label for tag-free comfort
- 3-panel hood with rubber stoppers and drawcords
- Exposed Vislon® zipper
- Matte black zipper pull debossed with New Era flag logo
- Princess seams
- Set-in sleeves
- Welded zippered pockets
- Thumbholes
- 2x2 rib knit cuffs and hem
- Longer-length, curved drop tail hem
- Debossed silicone New Era flag logo at hem



front

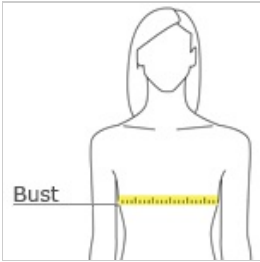


back

CARE INSTRUCTIONS

Machine wash cold with like colors; do not use fabric softener; tumble dry low; remove promptly; only non-chlorine bleach when needed; cool iron if necessary; do not dry clean.

HOW TO MEASURE



BUST

Measure under the arm and around the fullest part of the bust with arms down, keeping tape horizontal.

SIZE CHART

	XS	S	M	L	XL	2XL	3XL	4XL
Size	2	4/6	8/10	12/14	16/18	20/22	24/26	28/30
Bust	32-34	35-36	37-38	39-41	42-44	45-47	48-51	52-55

COLOR INFORMATION



Black
PMS NTR BLACK

Graphite
PMS 7540C

Shadow Grey
PMS COOL GRAY

True Navy
PMS 533C

10C