

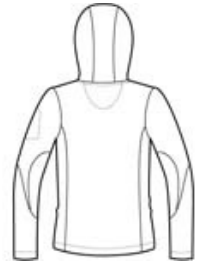


Our hooded soft shell stands up to the elements and stands out with texture and bar tack details. Highly breathable and soft, this water resistant jacket is just right for the workday or the weekend. A hood and zippered sleeve vents add function and up-to-the-minute appeal.

- 96/4 poly/spandex woven shell bonded to a water-resistant film insert and a 100% polyester microfleece
- 1000MM fabric waterproof rating
- 1000G/M<sup>2</sup> fabric breathability rating
- Hood with locking drawcord for adjustability
- Storm flap with chin guard
- Ergonomic zipper pulls
- Princess seams
- Zippered chest and sleeve pockets with contrast bar tack
- Front zippered pockets with contrast bar tack
- Port Pocket™ for easy embroidery access
- Open hem



front



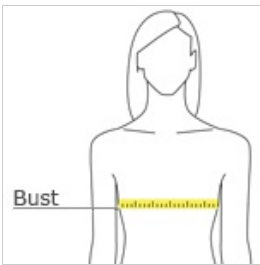
back

**CARE INSTRUCTIONS**

Machine wash cold. Do not dry clean. Do not iron. Do not bleach. Do not tumble dry.

[Tips For Effectively Screen Printing Polyester Fabrics](#)

**HOW TO MEASURE**



**BUST**  
Measure under the arm and around the fullest part of the bust with arms down, keeping tape horizontal.

**SIZE CHART**

	XS	S	M	L	XL	XXL	3XL	4XL
Size	2	4/6	8/10	12/14	16/18	20/22	24/26	28/30
Bust	32-34	35-36	37-38	39-41	42-44	45-47	48-51	52-55

**COLOR INFORMATION**

