



With a beautiful two-color weave--not to mention wrinkle resistance--this poplin shirt has a pleasing texture and truly impresses in the office.

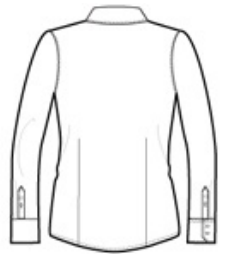
- 3-ounce, 60/40 cotton/poly
- Open collar and neckline
- Front and back darts
- Pearlized buttons
- Mitered two-button cuffs

CARE INSTRUCTIONS

MACHINE WASH COLD WITH LIKE COLORS, ONLY
NON-CHLORINE BLEACH, TUMBLE DRY LOW, WARM
IRON IF NEEDED

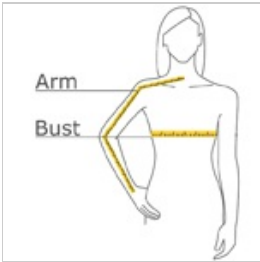


front



back

HOW TO MEASURE



BUST

Measure under the arm and around the fullest part of the bust with arms down, keeping tape horizontal.

ARM

Place hand on hip. Start at the center of the back of the neck and measure across the shoulder, to the elbow, and then down to the wrist.

SIZE CHART

	XS	S	M	L	XL	XXL	3XL	4XL
Size	2	4/6	8/10	12/14	16/18	20/22	24/26	28/30
Bust	32-34	35-36	37-38	39-41	42-44	45-47	48-51	52-55
Arm	30 - 30 3/4	30 3/4 - 31 1/2	31 1/2 - 32	32 - 32 1/2	32 1/2 - 33	33 - 33 3/8	33 3/8 - 33 3/4	33 3/4 - 34 1/2

COLOR INFORMATION

							
Chambray Blue PMS 3584C	Dark Cactus Green PMS 2266C	Deep Blue PMS 2380C	Grape Harvest PMS 7665C	Navy Frost PMS 533C	Pink Orchid PMS 3582C	Red Oxide PMS 7638C	Soft Black PMS NTR BLACK C