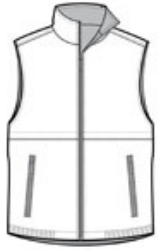




Two versatile looks for one great price! This reversible vest has a Taslan shell for wind and water resistance and a heavyweight fleece side to keep you warm.

- 100% polyester Taslan shell
- 6.8-ounce, 100% polyester fleece body lining
- Front and back vents for easy decoration access
- Front zippered pockets on Taslan side
- Open pockets on fleece side
- Elastic hem

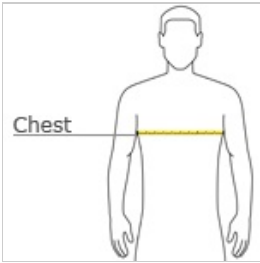


front



back

**HOW TO MEASURE**



**CHEST WIDTH**

Measure under the arm and around the fullest part of the chest with arms down, keeping tape horizontal.

**SIZE CHART**

	XS	S	M	L	XL	2XL	3XL	4XL	5XL	6XL
Chest	32-34	35-37	38-40	41-43	44-46	47-49	50-53	54-57	58-60	61-64

**COLOR INFORMATION**



Battleship Grey  
PMS 426 C



True Black  
PMS NTR BLACK



True Navy  
PMS 533 C

C