



With horizontal baffles, a slight sheen and insulation that simulates down feathers, this is the newest puffy on the horizon. A water-resistant finish helps keep light rain out.

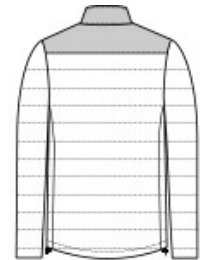
- 100% polyester shell and lining
- 90/10 polyester/spandex woven overlay on shoulders
- Molded center front zipper
- Elastic cuffs
- Port Pocket™ for decoration access
- Molded zippered hand pockets
- Insulation method: 10.4-oz. polyfill
- Water protection method: water-resistant finish on shell, PU coating on lining

CARE INSTRUCTIONS

Machine Wash Cold With Like Colors Or Separate. Do Not Use Fabric Softener. Only Non-Chlorine Bleach When Needed. Tumble Dry Low. Cool Iron If Necessary.



front



back

HOW TO MEASURE



CHEST WIDTH

Measure under the arm and around the fullest part of the chest with arms down, keeping tape horizontal.

SIZE CHART

| | XS | S | M | L | XL | 2XL | 3XL | 4XL |
|-------|-------|-------|-------|-------|-------|-------|-------|-------|
| Chest | 32-34 | 35-37 | 38-40 | 41-43 | 44-46 | 47-49 | 50-53 | 54-57 |

COLOR INFORMATION



Deep Black
PMS Black C



Deep Smoke/ Grey
Smoke
PMS 425C



Dress Blue Navy
PMS 533C



True Blue/ Deep
Black
PMS 654C