



A wear-anywhere lighter weight jacket at an out-of-this-world price. Built to charge through mild wind and rain, our Lightweight Charger Jacket features a water-resistant shell and warm fleece body lining for year-round versatility.

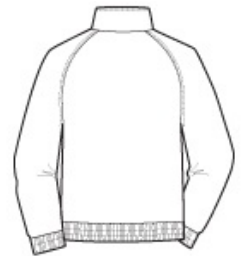
- 100% polyester Taslan shell
- 6.8-ounce, 100% polyester lightweight fleece body lining
- 100% polyester sleeve lining
- Front zippered pockets
- Molded zipper
- Interior pocket
- Port Pocket™ for easy embroidery access
- Elastic cuffs with adjustable self-fabric tabs and hook and loop closures
- Elastic waistband

**CARE INSTRUCTIONS**

Machine wash cold with like colors, only non-chlorine bleach if needed. Tumble dry low, remove promptly, cool iron if necessary. Do not dry clean.

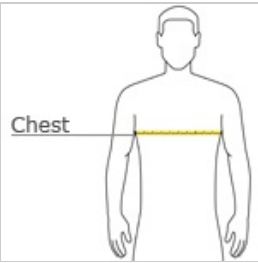


front



back

**HOW TO MEASURE**



**CHEST WIDTH**

Measure under the arm and around the fullest part of the chest with arms down, keeping tape horizontal.

**SIZE CHART**

	XS	S	M	L	XL	2XL	3XL	4XL	5XL	6XL
Chest	32-34	35-37	38-40	41-43	44-46	47-49	50-53	54-57	58-60	61-63

**COLOR INFORMATION**



Battleship Grey  
PMS 432 C



True Black  
PMS NTR BLACK



True Navy  
PMS 533C

C