



District® Medal Full-Zip Hoodie. DT565



Strengthen your style impact with this lightweight hoodie made for ease and versatility.

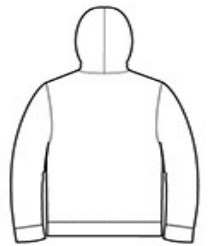
- 4.9-ounce, 90/10 combed ring spun cotton/poly, 30 singles
- Tear-away label
- Self-fabric back neck tape
- YKK Metaluxe® zipper
- Front pockets
- Self-fabric cuffs and hems

CARE INSTRUCTIONS

Machine wash cold with like colors. Do not use fabric softener. Non-chlorine bleach, when needed. Tumble dry low. Remove promptly. Cool iron, if necessary.

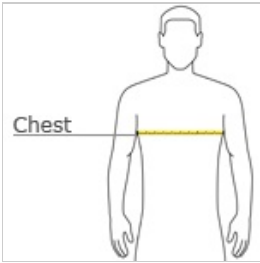


front



back

HOW TO MEASURE



CHEST WIDTH

Measure under the arm and around the fullest part of the chest with arms down, keeping tape horizontal.

SIZE CHART

	XS	S	M	L	XL	2XL	3XL	4XL
Chest	32-34	35-37	38-40	41-43	44-46	47-49	50-53	54-57

COLOR INFORMATION



Black
PMS NTR BLACK
C



Deep Royal



Light Grey
PMS COOL GRAY PMS 433C
6C



New Navy