

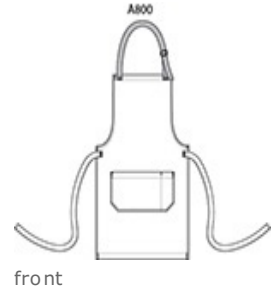


Craftsman styling creates a signature look in this apron that's perfect for bistros, pubs, cooking classes and more. The wrinkle-resistant fabric has a denim-like look which blends performance with style to make a sophisticated statement.

- 7-ounce, 60/40 cotton/poly yarn-dyed twill
- Adjustable contrast webbing neck strap with antique-finish metal slider
- Patch pocket, pen pocket
- Self-fabric waist ties
- Contrast stitch details
- Measures: 25"w x 34.5"l

CARE INSTRUCTIONS

Machine Wash Cold, Only Non Chlorine Bleach when needed, Tumble Dry Low, Do Not Dry Clean.



SIZE CHART

	OSFA
Length	34 1/2
Apron Waist Width	25

COLOR INFORMATION



Ash Grey



Dark Midnight