



# Nike Tall Long Sleeve Dri-FIT Stretch Tech Polo. 604940

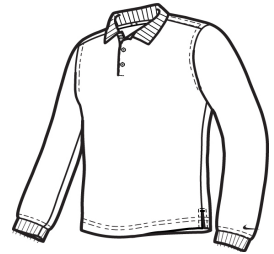


Long sleeves elevate this polo to another level of sophistication while Dri-FIT moisture management technology adds unparalleled performance. Stretch fabric for hassle-free swinging motion. Features a flat knit collar and cuffs and a three-button placket. Heat transfer label for tag-free comfort. Dyed-to-match buttons on Black and Midnight Navy. White buttons on Varsity Red, Anthracite and Blue Sapphire. Side vents. The contrast Swoosh design trademark is embroidered on the lower left sleeve. Made of 5-ounce, 100% polyester Dri-FIT fabric.

### CARE INSTRUCTIONS

Machine wash cold, wash inside out; wash with like colors. Do not use softeners. Do not use bleach. Tumble dry low. Do not iron. Do not dry clean

[Tips For Effectively Screen Printing Polyester Fabrics](#)

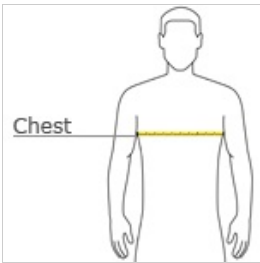


front



back

## HOW TO MEASURE



### CHEST WIDTH

Measure under the arm and around the fullest part of the chest with arms down, keeping tape horizontal.

## SIZE CHART

|       | LT      | XLT         | 2XLT            | 3XLT        | 4XLT    |
|-------|---------|-------------|-----------------|-------------|---------|
| Chest | 41 - 44 | 44 - 48 1/2 | 48 1/2 - 53 1/2 | 53 1/2 - 58 | 58 - 63 |

## COLOR INFORMATION



Anthracite  
PMS 432C



Black  
PMS PROCESS  
BLACK C



Blue Sapphire  
PMS 661C



Midnight Navy  
PMS 2767C



Varsity Red  
PMS 704C