



Nike Long Sleeve Dri-FIT Stretch Tech Polo. 466364

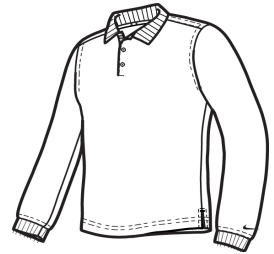


Long sleeves elevate this polo to another level of sophistication while Dri-FIT moisture management technology adds unparalleled performance. Stretch fabric for hassle-free swinging motion. Flat knit collar and cuffs. Heat transfer label for tag-free comfort. Three-button placket. Dyed-to-match buttons on White, Black and Midnight Navy. White buttons on Varsity Red, Anthracite and Blue Sapphire. The contrast Swoosh design trademark is embroidered on the lower left sleeve. Side vents. Made of 5-ounce, 100% polyester Dri-FIT fabric.

CARE INSTRUCTIONS

Machine wash cold. wash inside out; wash with like colors. Do not use softeners. Do not use bleach. Tumble dry low. Do not iron. do not dry clean

[Tips For Effectively Screen Printing Polyester Fabrics](#)

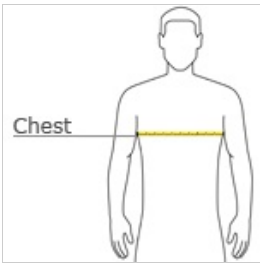


front



back

HOW TO MEASURE



CHEST WIDTH

Measure under the arm and around the fullest part of the chest with arms down, keeping tape horizontal.

SIZE CHART

	XS	S	M	L	XL	2XL	3XL	4XL
Chest Size (inches)	32-35	35 - 37 1/2	37 1/2 - 41	41 - 44	44 - 48 1/2	48 1/2 - 53 1/2	53 1/2 - 58	58 - 63

COLOR INFORMATION



Anthracite
PMS 432C



Black
PMS PROCESS
BLACK C



Blue Sapphire
PMS 661C



Midnight Navy
PMS 2767C



Varsity Red
PMS 704C



White